

Electrode for bolt welding



▶ By application of insulating materials (KCF, Ceramics) inside of electrode, it prevents screw from breakage and damage due to electric split flow.

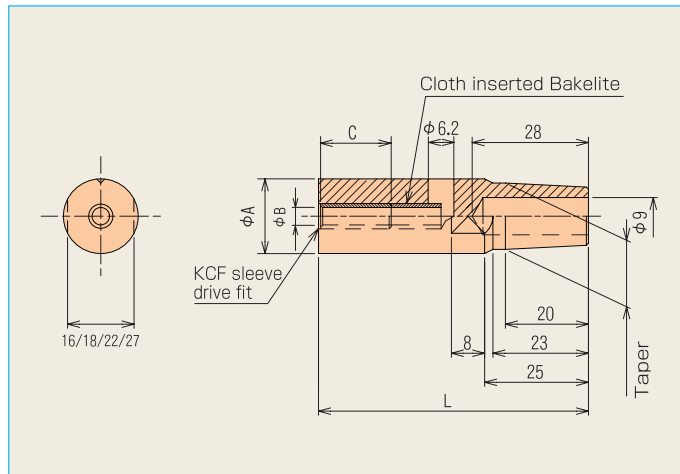


▶ We have all-in-one type and split type.

- ① All-in-one type
By making electrode diameter thinner, it can work on welding at narrow position.
- ② Split type
Only lower electrode can be replaced. There are 2 kinds by difference of insulating materials. This works only combination with * lower electrode holder.
* This lower electrode holder is same with lower electrode holder for weld nut.
- **Integrated type with electrode for bolt**
Lower electrode using KCF as insulator. KCF is metal with insulating coating and superior in electrical insulation and durability in impulse.
- **Saiper tip (Si₃N₄)**
Lower electrode using Saiper tip (Si₃N₄) as insulation.

All-in-one type electrode for bolt welding

● mark and blue letter means ordered product.



Order code

A **B** Code **B** - **L** - Taper

All-in-one type

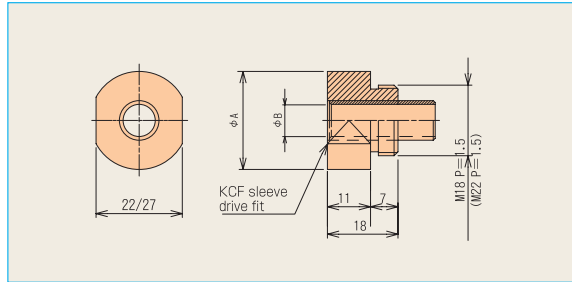
Unit : mm

Nut	Size					
	A	Code	B	C	L	Taper
M 4	18	4	4.2	17	65	16 ¹ / ₁₀ ●, 16 ¹ / ₅ ●
M 5	18	5	5.2	17	65	16 ¹ / ₁₀ ●, 16 ¹ / ₅ ●
M 6	18	6	6.2	22	70	16 ¹ / ₁₀ , 16 ¹ / ₅ ●
M 8	20	8	8.2	27	75	16 ¹ / ₁₀ , 16 ¹ / ₅ ●
M10	25	10	10.2	32	85	16 ¹ / ₁₀ , 16 ¹ / ₅ ●
M12	30	12	12.2	32	85	16 ¹ / ₁₀ ●, 16 ¹ / ₅ ●

Cloth inserted Bakelite.
KCF sleeve drive fit

Split type electrode for bolt welding

● mark and blue letter means ordered product.



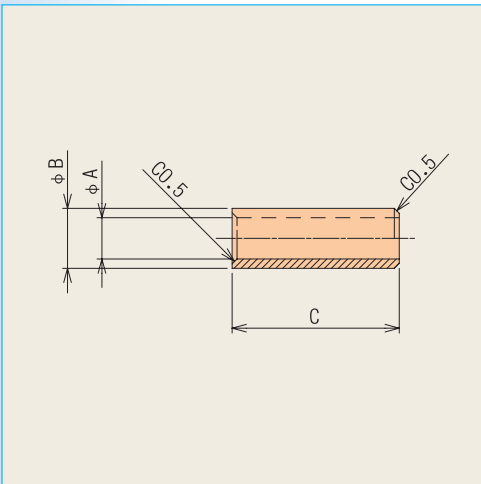
Order code

A **M** **B** - **B** Code - **B**

All-in-one type		Unit : mm	
Nut	Code	Size	
		A	B
M 4	4	25	4.2
M 5	5	25	5.2
M 6	6	25	6.2
M 8	8	25	8.2
M10	10	30	10.2
M10	10	35	10.2 ●
M12	12	30	12.2
M12	12	35	12.2

KCF sleeve drive fit

KCF sleeve



Order code

(Sleeve inside diameter) (φ)

KCF-A Code **A**

Unit : mm

Code	Size		
	A	B	C
4	4	5.1	17
5	5	6.1	17
6	6	7.1	22
7	7	8.1	22
8	8	9.1	27
9	9	10.1	27
10	10	11.1	32
11	11	12.1	32
12	12	13.1	32

All items ordered products

Order code

(Sleeve inside diameter) (φ)

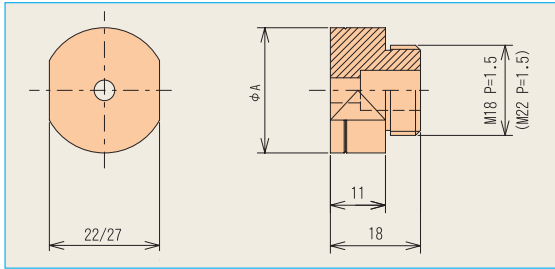
KCF-B Code **A**

Unit : mm

Code	Size								
	A					B	C		
4	4.0	4.2	4.4	4.6	4.8	6.1	17		
5	5.0	5.2	5.4	5.6	5.8	7.1	17		
6	6.0	6.2	6.4	6.6	6.8	8.1	22		
7	7.0	7.2	7.4	7.6	7.8	9.1	22		
8	8.0	8.2	8.4	8.6	8.8	10.1	27		
9	9.0	9.2	9.4	9.6	9.8	11.1	27		
10	10.0	10.2	10.4	10.6	10.8	12.1	32		
11	11.0	11.2	11.4	11.6	11.8	13.1	32		
12	12.0	12.2	12.4	12.6	12.8	14.1	32		
13	-	13.2	-	-	-	15.1	32		
14	-	14.2	-	-	-	16.1	32		
15	-	15.2	-	-	-	17.1	32		

Saiper tip

● mark and blue letter means ordered product.



Order code

Ceramic

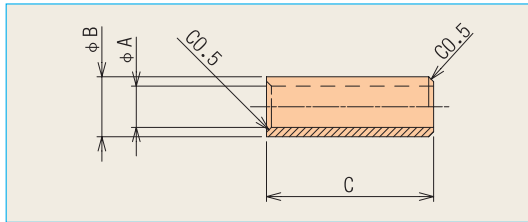
A MB-Saiper Inside diameter × Outer diameter - Length

Dual use as holder for welding nuts

Unit : mm

Size	Saiper size		
A	Inside diameter	Outer diameter	Length
25	4.2	8	20 ●
25	5.2	9	20 ●
25	6.2	10	20
25	8.2	12	20
30	10.2	14	25 ●
30	12.2	16	25 ●

Saiper holder Ø15 × 10¹, Ø19 × 5¹ Bakelite

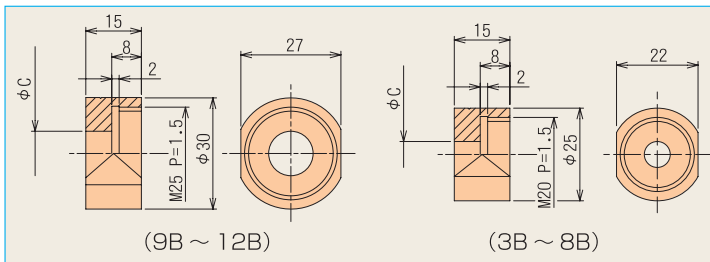


Order code

Saiper M Code

Unit : mm

Code	Size		
	A	B	C
3	3.0	7	20
4	4.0	8	20
5	5.0	9	20
6	6.0	10	20
7	7.0	11	20
8	8.0	12	20
9	9.0	13	25
10	10.0	14	25
11	11.0	15	25
12	12.0	16	25



Order code

Saiper tip M Code

Unit : mm

Code	Size
	C
3B	4
4B	5
5B	6
6B	7
7B	8
8B	9
9B	10
10B	11
11B	12
12B	13

All items ordered products

